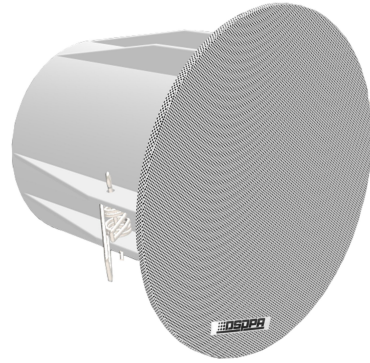


# DSP3011C

## Ceiling Speaker



### Description

DSP3011C is a ceiling speaker with a back cover. With clear and bright sound, it is suitable for public address and background music broadcasting. With IP66 waterproof structure design and simple appearance modeling, it is suitable for a variety of indoor occasions.

### Features

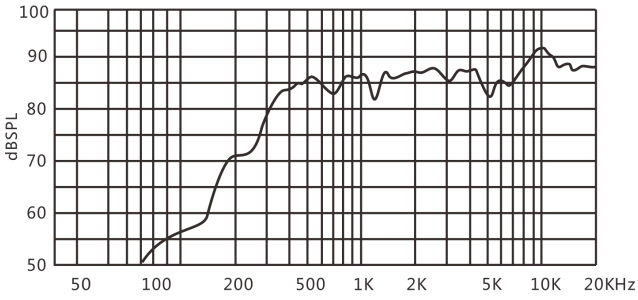
- Suitable for public address and background music broadcasting.
- With clear and bright sound, bringing quality sound enjoyment.
- Made of high-quality paper cone with special processing, enabling good sound performance.
- With IP66 waterproof structure design and simple appearance modeling.
- Adopt polymer engineering plastic injection molding, durable and reliable.

### Specifications

Model	DSP3011C
Speaker Unit	3"×1
Rated Power (RMS)	6W
Working Voltage	100V
Sensitivity (1m, 1W)	87dB±2dB
MAX. SPL. (1m)	94dB±2dB
Frequency Response	300Hz~20kHz
Dimensions (W×H)	∅125×93mm
Product Weight	0.5kg

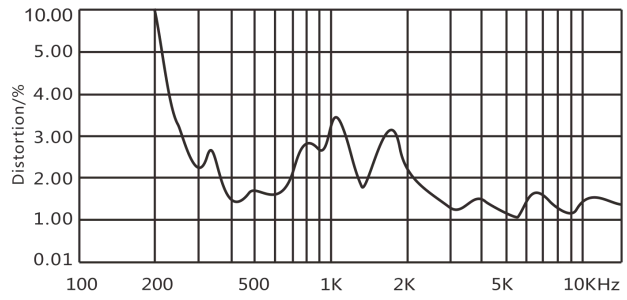
### Frequency Response

(dB SPL, 1W, 1m)



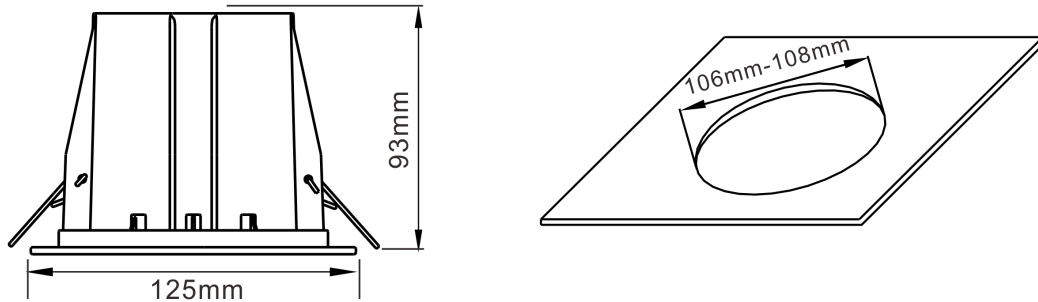
### Distortion

(THD < 5% 1W, 1m, 100Hz-10kHz)



## Installation & Connection

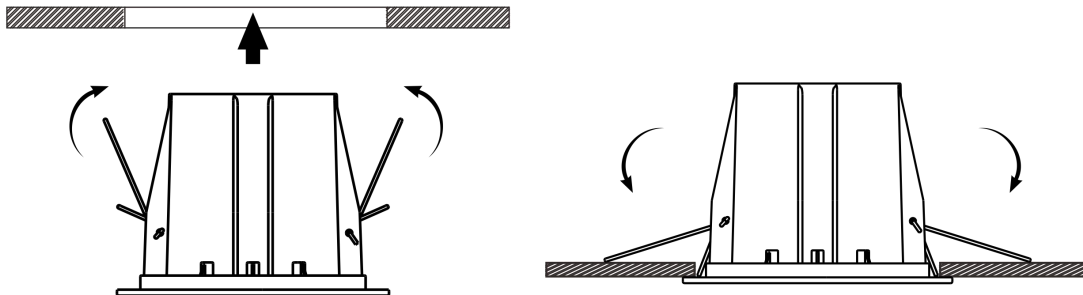
① Cut a mounting hole with a diameter of 106-108mm in the ceiling (as shown below).



② Connect the audio broadcast transmission line, and select the appropriate terminal for connection according to the actual power requirements and the table below.

Power / Terminal \ Line Voltage	70V	100V
Red -- Blue	3W	6W
Red -- Yellow	1.5W	3W

③ Push up the spring clamps on both sides of the speaker and keep it in this state (To avoid spring pinching, it is recommended to wear work gloves when doing this operation). Then let go and gently push the speaker to embed it into the ceiling (as shown below).



④ Finally, check whether it is installed firmly.