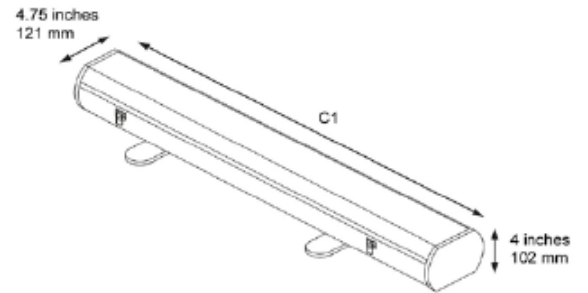
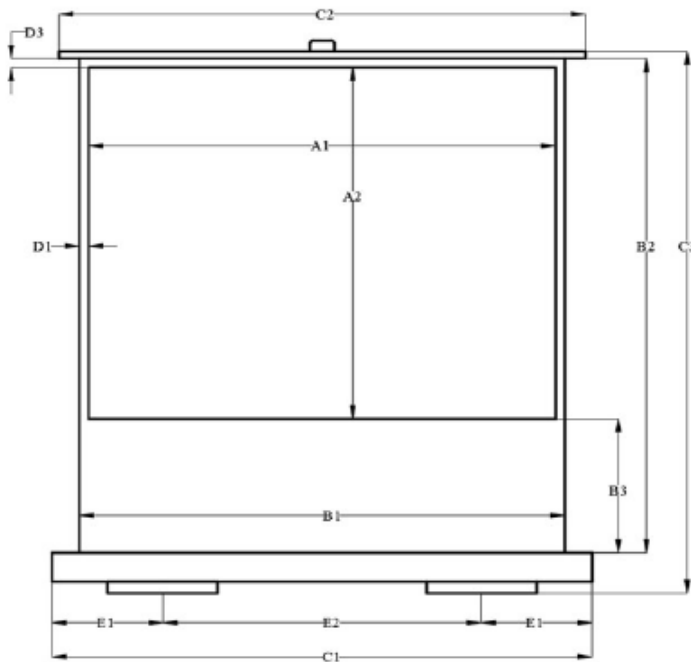


ezCinema 2 Series Dimensions Table

Model Number	Nominal Diagonal	Aspect Ratio	Viewable Width (A1)	Viewable Height (A2)	Screen Width (B1)	Screen Height (B2)	Bottom Black Border (B3)	Overall Case Length (C1)	Top Bar Length (C2)	Overall Height (C3)	Feet Length	L/R Borders (D1)	Top Black Border (D3)	(E1)	Distance Between Feet (E2)
Unit: Inches															
F52XWV2	52"	4:3	41.7	30.9	44.1	62.6	30.3	49.2	48.0	65.7	17.0	1.2	1.4	11.0	27.2
F84XWV2	84"	4:3	67.3	50.4	69.7	82.3	30.7	74.8	73.6	85.4	17.0	1.2	1.4	14.2	46.5
F105XWV2	105"	4:3	83.9	63.0	86.2	93.7	29.5	91.3	90.2	96.9	17.0	1.2	1.4	22.8	45.7
F84XWH2	84"	16:9	73.2	41.3	75.6	79.9	37.0	80.7	79.5	83.1	17.0	1.2	1.4	16.9	46.9
F95XWH2	95"	16:9	82.7	46.5	85.0	84.6	36.6	91.3	90.2	87.8	17.0	1.2	1.4	22.8	45.7
F107XWH2	107"	16:9	93.3	52.6	95.7	80.3	26.4	101.2	100.0	83.5	17.0	1.2	1.4	21.7	57.7
F110NWX2	110"	16:10	93.7	59.8	95.7	85.4	24.4	101.2	100.0	88.6	17.0	1.2	1.4	21.7	57.7
Unit: mm															
F52XWV2	52"	4:3	1060	785	1120	1590	770	1250	1220	1670	432	30	35	280	690
F84XWV2	84"	4:3	1710	1280	1770	2090	780	1900	1870	2170	432	30	35	360	1180
F105XWV2	105"	4:3	2130	1600	2190	2380	750	2320	2290	2460	432	30	35	580	1160
F84XWH2	84"	16:9	1860	1050	1920	2030	940	2050	2020	2110	432	30	35	430	1190
F95XWH2	95"	16:9	2100	1180	2160	2150	930	2320	2290	2230	432	30	35	580	1160
F107XWH2	107"	16:9	2370	1335	2430	2040	670	2570	2540	2120	432	30	35	552	1466
F110NWX2	110"	16:10	2380	1520	2430	2170	620	2570	2540	2250	432	30	35	552	1466

Note: Data Error ±1"

The listed measurements are for general reference only. Please contact Elite Screens to verify product design and dimensions before attempting to integrate its products with any structural or furniture modification. Although a manufacturer may offer product advice, it may be taken or disregarded at the integrator's discretion. Elite Screens will not be held responsible or be otherwise liable for faulty installations.

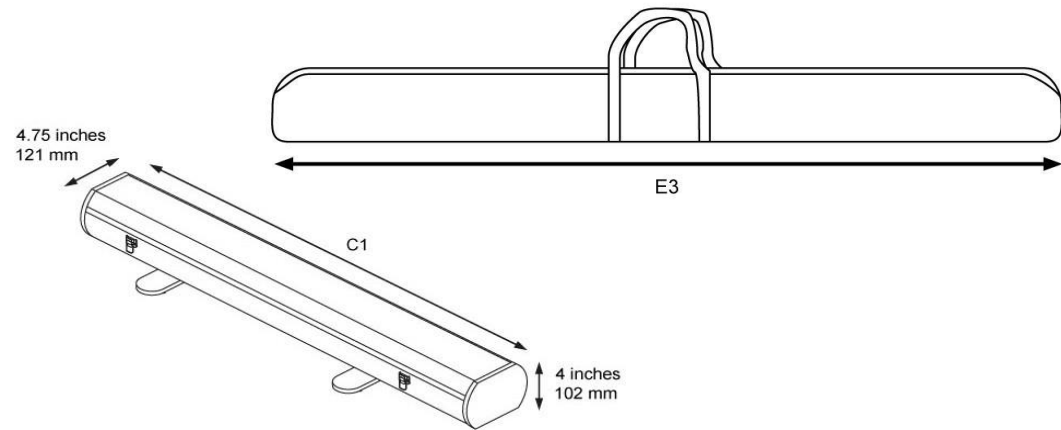
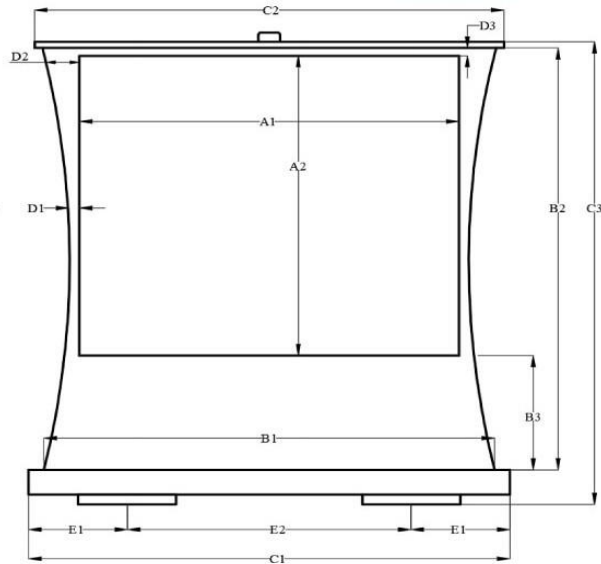


ezCinema Tab-Tension Series Dimensions Table

Model Number	Diag. Size	Aspect Ratio	Screen Material	Gain	View Width (A1)	View Height (A2)	Screen Width (B1)	Screen Height (B2)	Bottom Black Border (B3)	Overall Case Length (C1)	Top Bar Length (C2)	Overall Height (C3)	Feet Length	L/R Borders (D1)	(D2)	Top Black Border (D3)	(E1)	Distance Between Feet (E2)	Carry Bag Length (E3)
Unit: inch																			
FT90XWV	90"	4:3	MaxWhite® 2	Gain 1.1	72.0	53.9	82.3	93.7	38.6	91.3	90.2	96.9	17.0	1.2	5.1	1.4	22.8	45.7	92.5
FT100XWV	100"	4:3	MaxWhite® 2	Gain 1.1	79.9	59.8	89.8	91.3	29.9	101.2	100.0	94.5	17.0	1.2	5.1	1.4	21.7	57.7	110.2
FT80XWH	80"	16:9	MaxWhite® 2	Gain 1.1	69.7	39.4	79.9	77.2	36.2	89.4	87.8	80.3	17.0	1.2	5.1	1.4	22.0	45.3	90.9
FT92XWH	92"	16:9	MaxWhite® 2	Gain 1.1	79.9	45.3	89.8	83.9	37.0	101.2	100.0	87.0	17.0	1.2	5.1	1.4	21.7	57.7	102.8
Unit:mm																			
FT80XWV	80"	4:3	MaxWhite® 2	Gain 1.1	1630	1220	1890	2140	860	2110	2090	2220	431.8	30	130	35	485	1150	2160
FT90XWV	90"	4:3	MaxWhite® 2	Gain 1.1	1830	1370	2090	2380	980	2320	2290	2460	431.8	30	130	35	580	1160	2350
FT100XWV	100"	4:3	MaxWhite® 2	Gain 1.1	2030	1520	2280	2320	760	2570	2540	2400	431.8	30	130	35	552	1466	2800
FT80XWH	80"	16:9	MaxWhite® 2	Gain 1.1	1770	1000	2030	1960	920	2270	2230	2040	431.8	30	130	35	560	1150	2310
FT92XWH	92"	16:9	MaxWhite® 2	Gain 1.1	2030	1150	2280	2130	940	2570	2540	2210	431.8	30	130	35	552	1466	2610
FT110XWH	110"	16:9	MaxWhite® 2	Gain 1.1	2440	1370	2690	2360	930	2898	2869	2360	431.8	30	130	35	552	1466	2930

Note: Data Error ±1"

The listed measurements are for general reference only. Please contact Elite Screens to verify product design and dimensions before attempting to integrate its products with any structural or furniture modification. Although a manufacturer may offer product advice, it may be taken or disregarded at the integrator's discretion. Elite Screens will not be held responsible or be otherwise liable for faulty installations.





ezCinema 2/ ezCinema Tab-Tension Series

Portable Floor Pull-Up Screen

USER'S GUIDE

Product Description

Thank you for purchasing the *ezCinema 2* portable free-standing projector screen. The *ezCinema 2* is a pull-up screen that conveniently raises and retracts using a scissor-back mechanism which allows the screen to promptly be setup and taken down in seconds.

Parts Identification

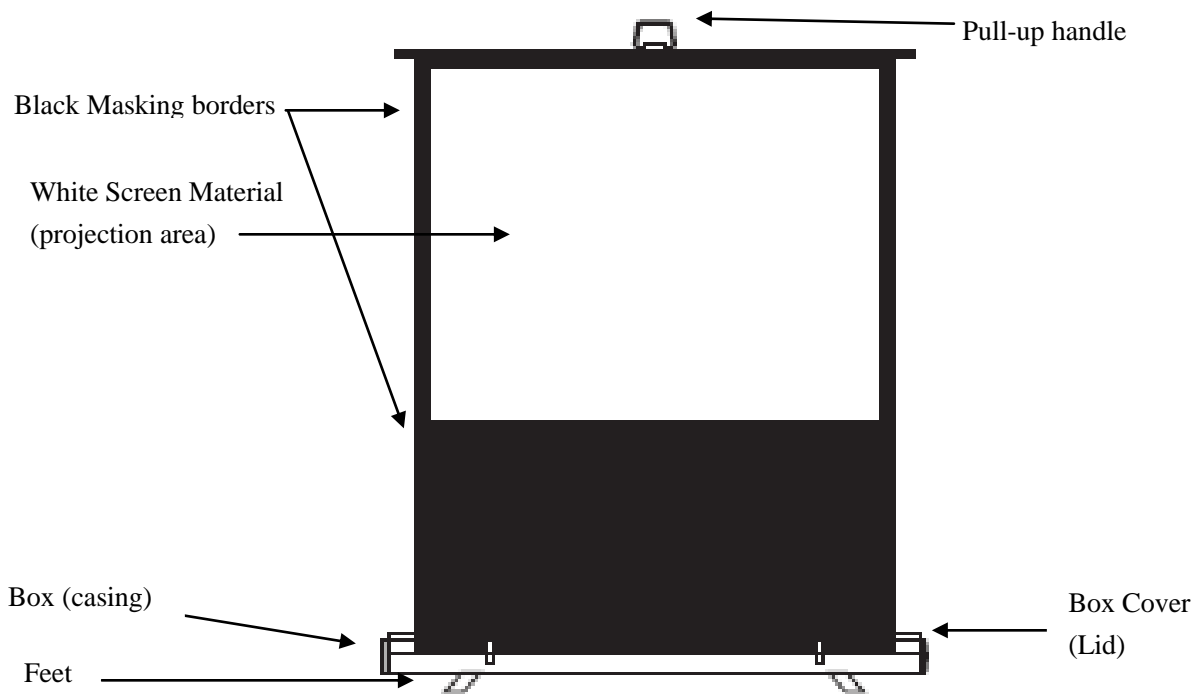


Fig. 3



Precautions:

Warning! Screen damage can result from operational errors if the precautions are not followed.

- In accordance with practicing home fire safety and avoiding screen damage, do not place the screen near or beside a fireplace or high temperature objects such as a gas stove, BBQ or heater.
- Place the screen beyond the reach of children.
- Do not use the screen in a very strong windy environment
- Do not use on uneven surfaces

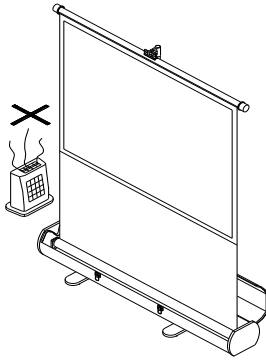


Fig. 1

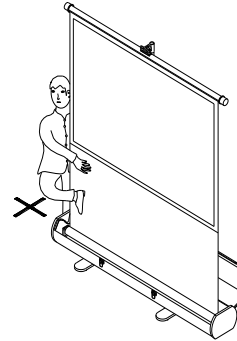


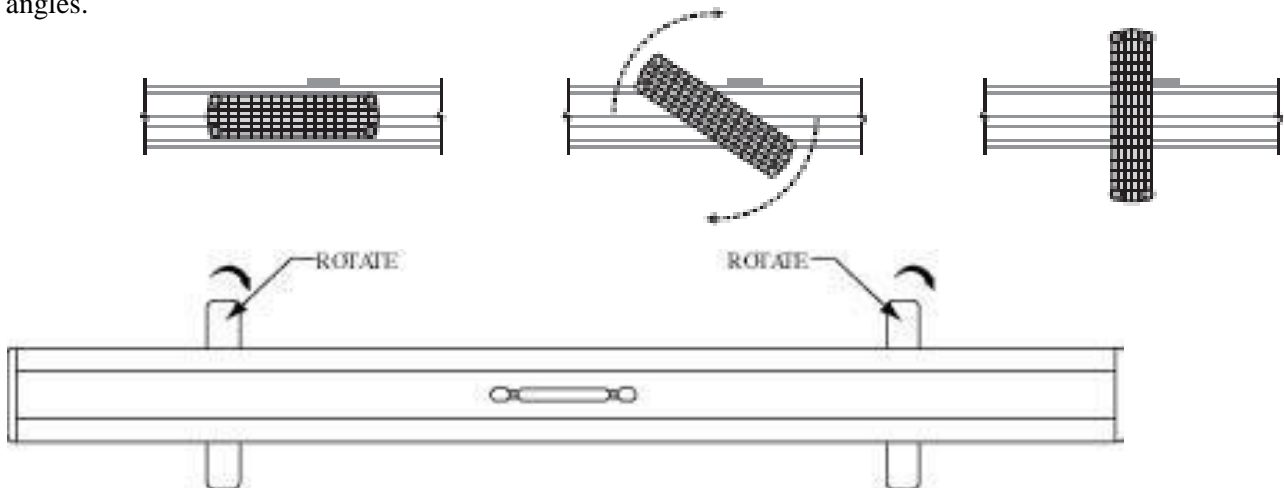
Fig. 2

Setting up the Screen

The ezCinema 2 screen is designed to be used as an easy to operate portable screen for a variety of presentation environments. Its design enables it to be versatile for use in either classroom, conference room, home or patio presentations. When packed, the unit carries with ease and opens up for projection presentations within seconds. As a general rule, portable projector screens should be installed in an area free from wind, heat or open flame sources such as a heater, BBQ grill or fireworks display.

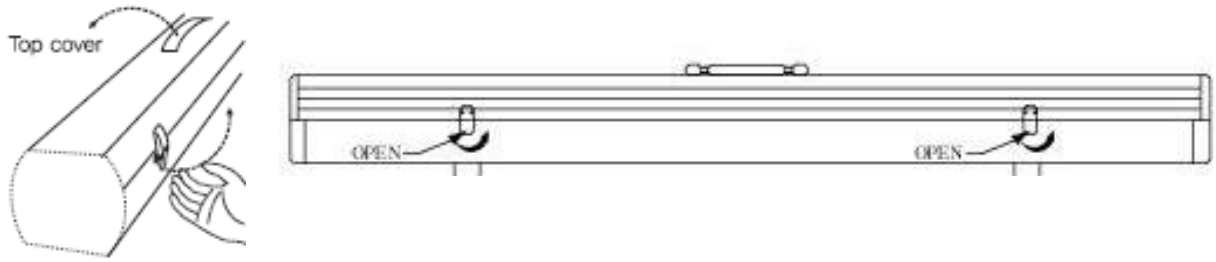
1. Extend base feet:

Locate the base feet on the bottom of the box at each end and rotate them clockwise until they form right angles.



2. Open the box cover:

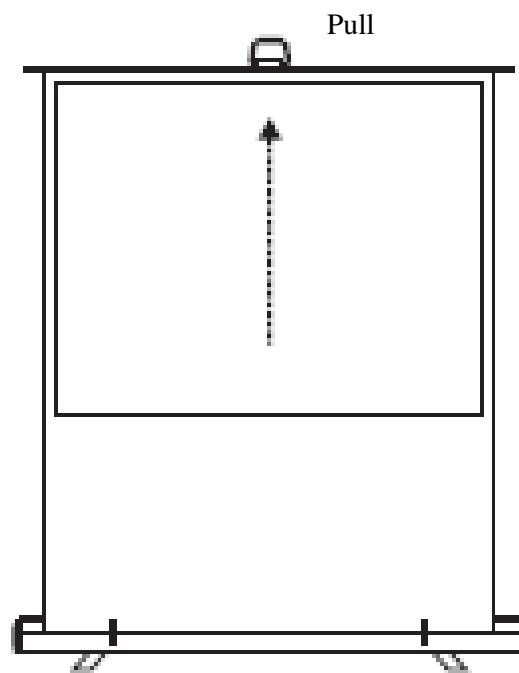
Unlatch the buckles at both ends of the box and open the box cover.



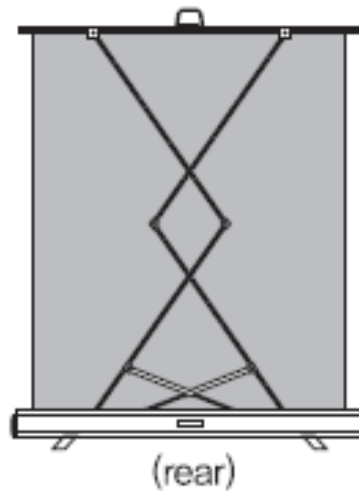
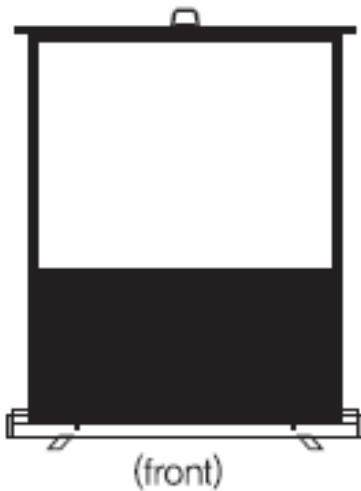
3. Pulling up the screen:

Carefully lift the screen by its handle and stop at the desired height position.

Note: The screen will only stop shortly after the bottom black rise has been exposed.



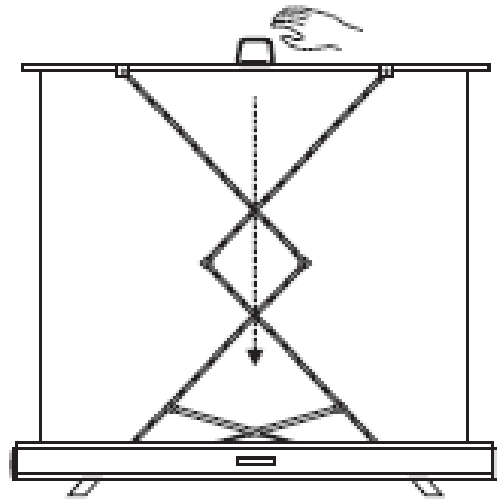
Example of screen fully extended front and back view



Putting screen away

1. Retract the screen into case:

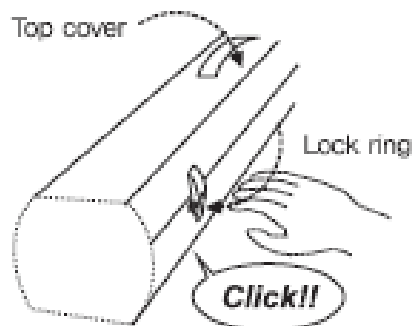
Press the screen's handle slowly in a downward motion and allow the screen to retract back gently into the housing.



Tip: If the screen does not go in the cradle, lift it up and maneuver it inside.

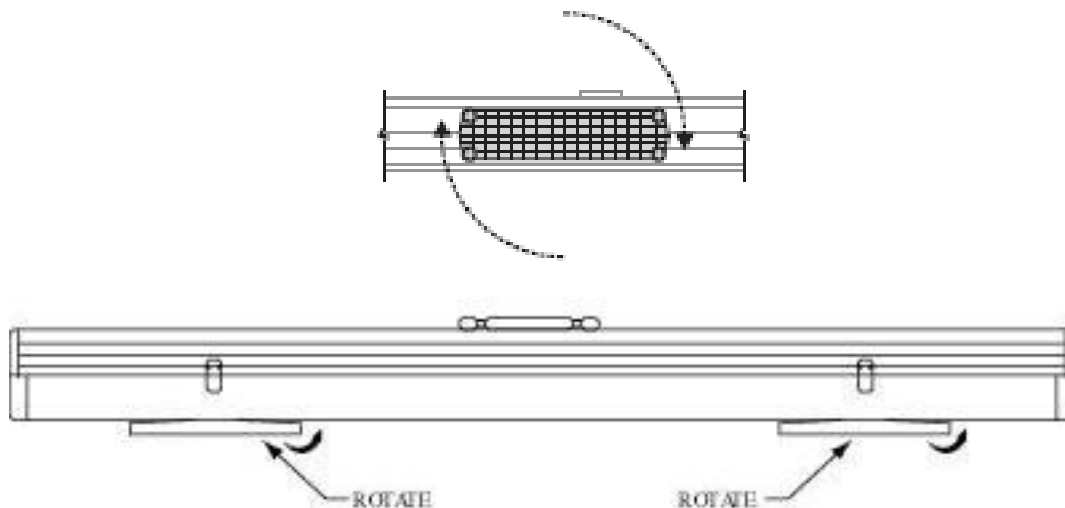
2. Closing it up:

Close the top cover and snap the buckles into place at both ends and verify that the screen's box is closed securely.



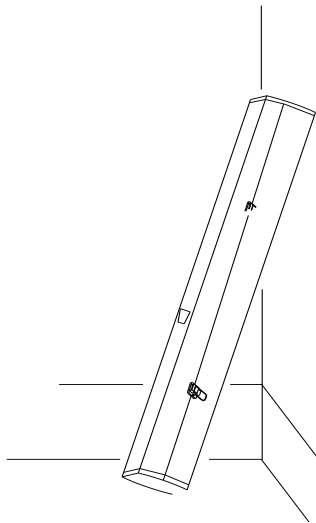
3. Draw the base feet back:

Slightly lift one end of the box at a time and rotate the two feet on the bottom of the box until they are in parallel alignment with the box.



4. Storing the screen:

The recommended place for storage would be a corner spot or in a closet, but the ultimate choice is up to you.



The following points should be noted to assure the sound performance of the screen.

1. Never use your hand to touch the screen surface.
2. Never scabble on the screen.
3. Don't touch the screen with hard or sharp objects.
4. Please use clean cotton cloth or soft dust brush to remove dust particles from the screen.
5. The screen material may be cleaned with mild soap and water on a soft cloth
6. Avoid using or storing the screen in extreme temperatures and direct sunlight

For a technical support or a local Elite Screens contact visit,

www.elitescreens.com



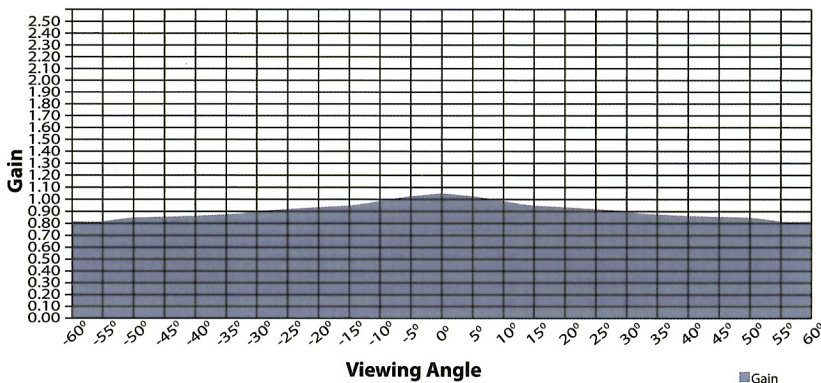
(Shown here on VMAX Dual® Series)

MaxWhite® Screen Material is the most versatile screen surface for front projection presentations. This material provides the widest possible viewer angles with perfect diffusion uniformity while giving precise definition, image color reproduction and black & white contrast. Screen Surface has black-backing to avoid light penetration and can be cleaned safely with mild soap and water. Woven screen material is a, multi-layer, cross- array coated with a matte white reflective compound.



On axis 0° Gain: 1.1
Viewing Cone: 180°

Elite Screens Series:
Manual, Tripod, Spectrum, ezCinema,
ezCinema Plus, PicoScreen™, VMAX & VMAX Dual®



- Multi-Layer Weave and Textured Surface Coating
- Gain: 1.1
- View Angle: 180° (90° ±LR)
- Mildew Resistant
- Black Backing
- Not compatible with Ultra/Short-throw Projectors
- Screen Surface can be easily cleaned
- Active 3D, 4K Ultra HD, and HDR ready
- GREENGUARD® and GREENGUARD® Gold Certified | UL 2818

