

# DALI WSR

Wireless Subwoofer Receiver

MANUAL



IN ADMIRATION OF MUSIC

# Contents

1. WSR Overview	3
2. Unpacking	4
3. Installation and Setup	5
3.1 Location	5
3.2 Installing and Switching On	6
3.3 Wireless Connections	7
4. Using your DALI WSR	9
5. Maintaining your DALI WSR	10
6. Technical Specifications	11

# Introduction

Thank you for choosing the DALI WSR (Wireless Subwoofer Receiver). DALI is renowned throughout the world for continually striving to enhance the experience of music while simultaneously designing audio products that better suit our lives and homes. The DALI WSR wireless subwoofer receiver is a further expression of those twin aspirations.

The DALI WSR is a technologically advanced product that requires thoughtful installation. We recommend therefore that you read this manual carefully, and follow its advice, when installing your DALI WSR.

Following this introduction the manual covers unpacking, installation and use, but begins with a short overview of the DALI WSR.



# 1. WSR Overview

The DALI WSR is a wireless subwoofer receiver that enables active subwoofers such as the DALI E-9 F or E-12 F to be connected wirelessly to either a DALI SOUND HUB or SOUND HUB COMPACT wireless streaming preamplifier.

The DALI WSR is intended to be located close to the subwoofer and connects to its input via the supplied RCA Phono cable. Once connected to mains power via a standard USB mains adaptor, the WSR will become available for wireless connection to a SOUND HUB or SOUND HUB COMPACT.



## 2. Unpacking

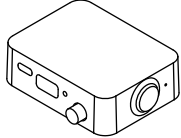
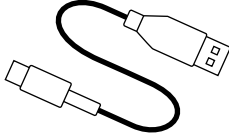
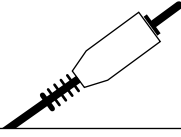
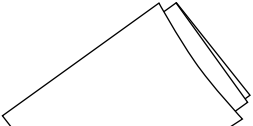
The contents of the DALI WSR pack is illustrated in Diagram 1 and listed below.

- 1: WSR
- 2: USB power supply cable
- 3: RCA Phono cable
- 4: Document pack

### NOTE

**We suggest that you keep your WSR packaging for future use. However, if that is not possible please dispose of it responsibly.**

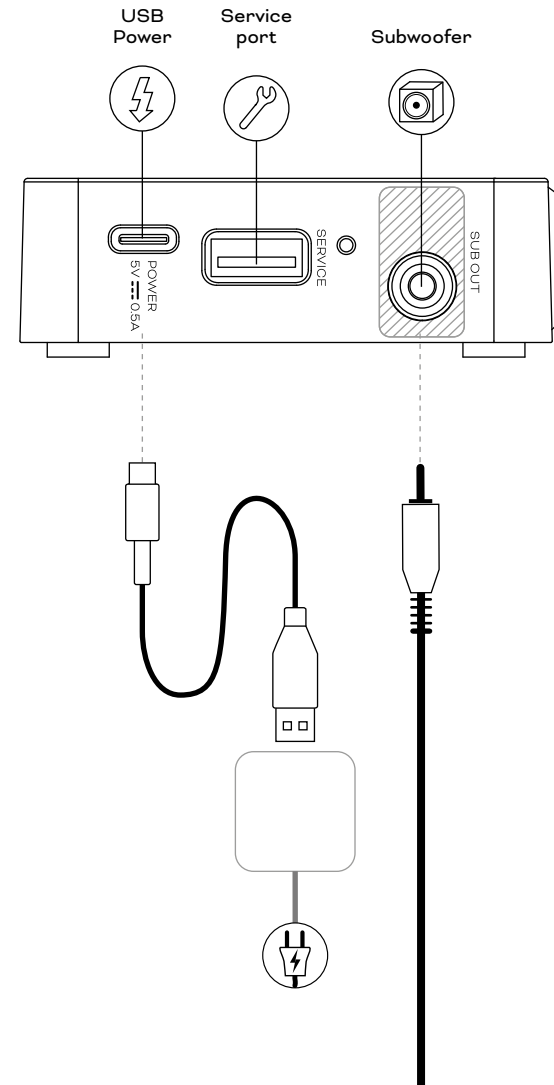
DIAGRAM 1

DALI WSR	
	× 1
	× 1
	× 1
	× 1

# 3. Installation and Setup

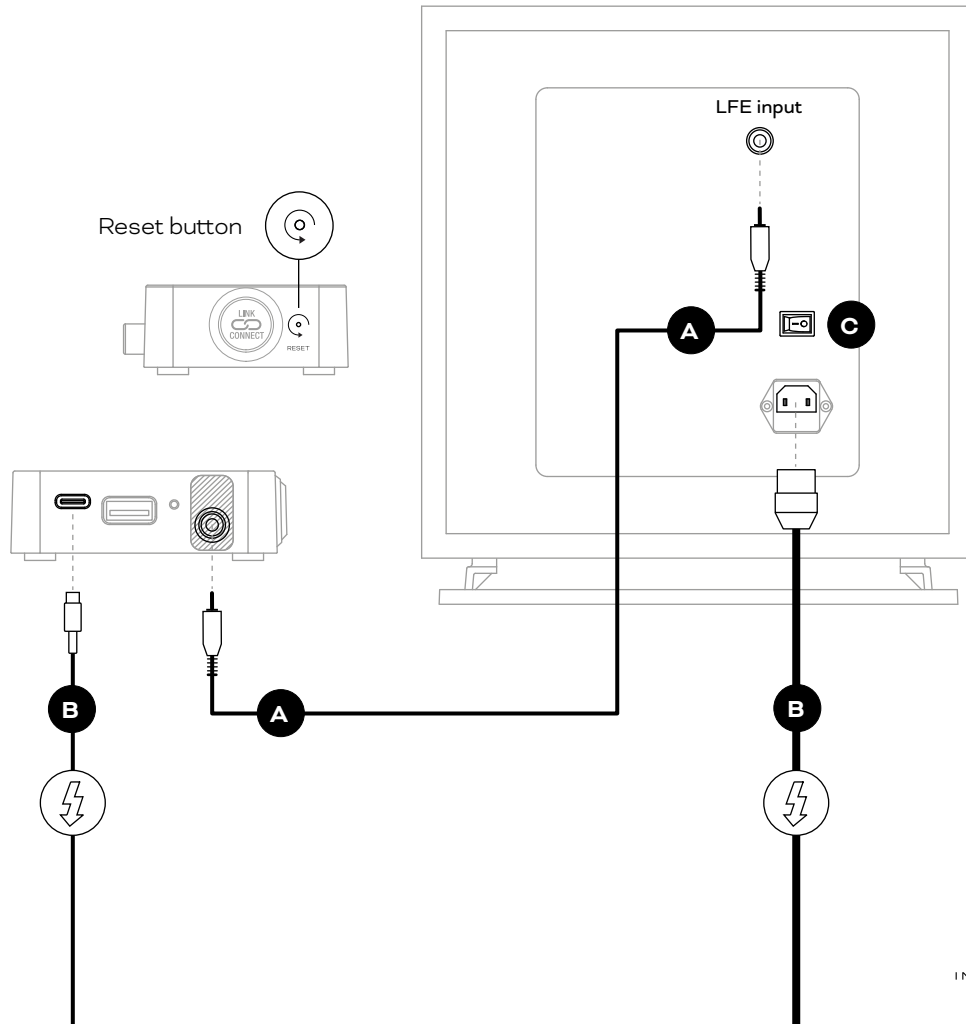
## 3.1 Location

Your DALI WSR can be located predominantly as is convenient for you and your home, although it should be close by the subwoofer to which it is to be connected. It also needs to be within reach of a mains power socket. The WSR can be placed on a furniture unit or shelf, or on or behind the subwoofer itself.



## 3.2 Installing and Switching On

DIAGRAM 2



Begin your DALI WSR installation process by following the steps below.

- Ensure that the subwoofer is switched off. If the subwoofer has no power switch, we recommend that it is disconnected from mains power while WSR connections are made.
- Use the supplied RCA Phono cable to connect the output socket of the WSR to the LFE input socket of the subwoofer (A). The output socket of the WSR is highlighted in Diagram 2. If necessary, refer to the subwoofer user manual for identification of its LFE input socket.
- Connect the WSR power supply to a mains socket and then connect the power supply to the WSR using the USB power cable supplied (B). The WSR will switch on immediately. The WSR USB power socket is illustrated in Diagram 2.
- Switch on the subwoofer or reconnect it to mains power (C). If the subwoofer is fitted with a volume control, we recommend it be set to around 25% of full volume.

### NOTE

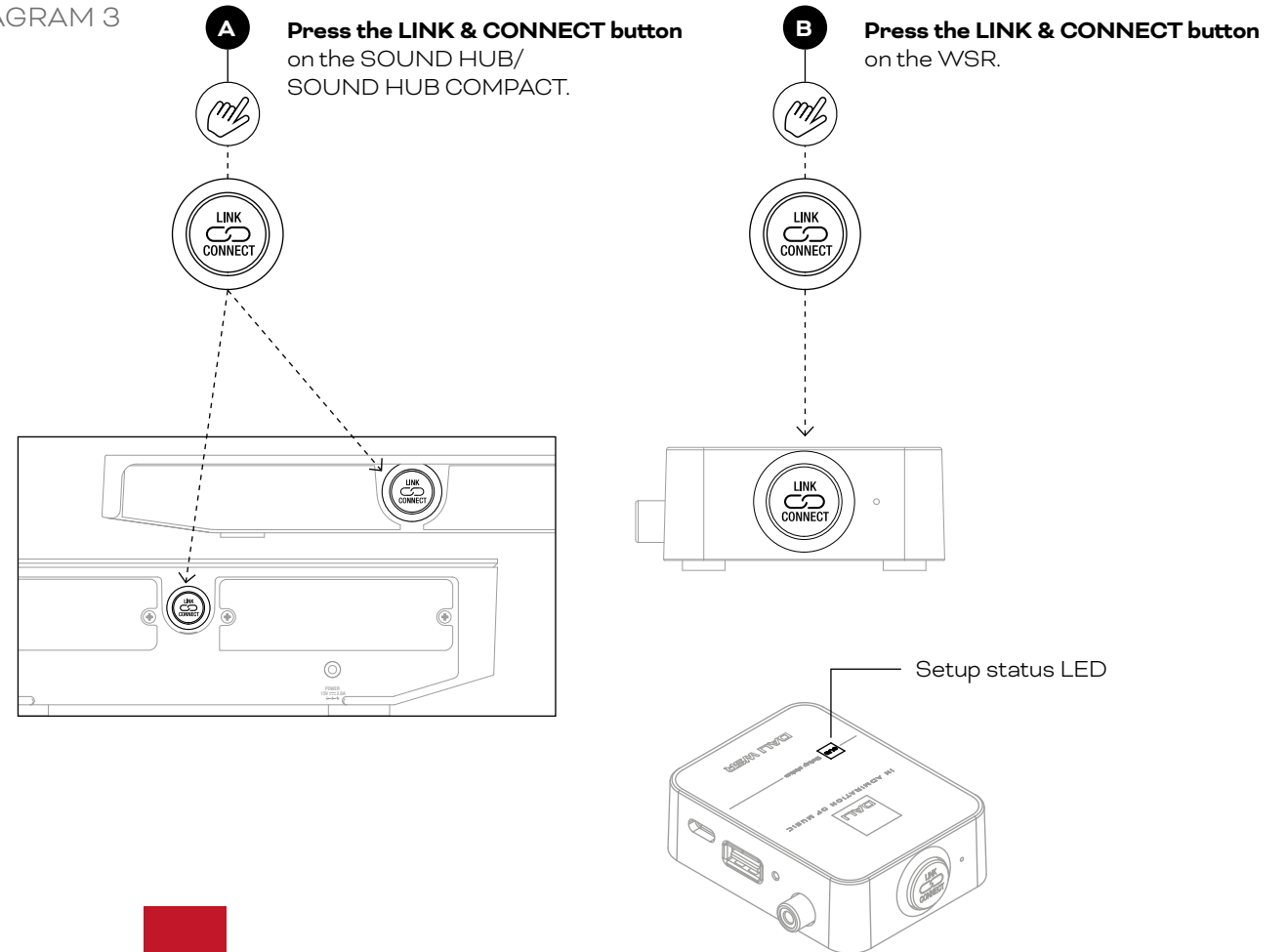
**If the subwoofer in use has no dedicated LFE input, connect the output of the WSR to the subwoofer's standard line input and either switch its low-pass filter to bypass or set its low-pass filter frequency to maximum.**

### 3.3 Wireless Connections

Once your WSR is installed and switched on, you can begin the process of connecting it wirelessly to your SOUND HUB or SOUND HUB COMPACT. This is described in the following steps.

- Ensure your SOUND HUB or SOUND HUB COMPACT is switched on, then press the LINK & CONNECT button on its rear panel **A**. In the case of a SOUND HUB, the top panel position display will illuminate, and the front panel volume indicator will cycle to indicate speaker connection mode. In the case of a SOUND HUB COMPACT, the top panel input indicators will flash slowly to indicate speaker connection mode.
- Now go to the WSR and press its LINK & CONNECT button **B**. The “SUB Setup Status” indicator will illuminate while connection to the SOUND HUB or SOUND HUB COMPACT is underway. The WSR’s LINK & CONNECT button and indication is illustrated in Diagram 3.

DIAGRAM 3

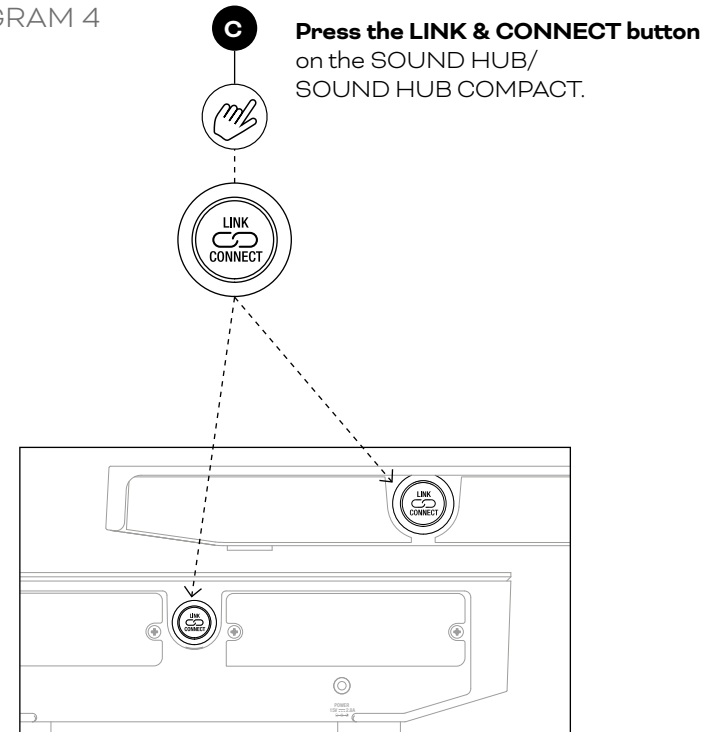


### 3.3 Wireless Connections

- When connection is established between the WSR and the SOUND HUB or SOUND HUB COMPACT, the “SUB Setup Status” indicator will flash slowly. The subwoofer will play a short confirmation tone.
- With the WSR connected to the SOUND HUB or SOUND HUB COMPACT, the WSR will be assigned to the subwoofer channel automatically.
- Now return to your SOUND HUB or SOUND HUB COMPACT and press its rear panel LINK & CONNECT button to confirm the WSR assignment to the subwoofer channel and to exit speaker connection mode **C**.  
All the connected speakers, including the subwoofer, will play a short confirmation tone, and the WSR’s “SUB Setup Status” indicator will be illuminated and stop flashing. The SOUND HUB or SOUND HUB COMPACT display and indicators will return to their normal mode.

The WSR connection procedure is illustrated in Diagram 4.

DIAGRAM 4





## 4. Using your DALI WSR

With your DALI WSR connected wirelessly to your SOUND HUB or SOUND HUB COMPACT you can begin to enjoy the benefits.

If you have previously enjoyed a subwoofer connected to your SOUND HUB or SOUND HUB COMPACT via their wired subwoofer outputs, you will probably already have set up the subwoofer and other speakers to work together. If this is the case you may not need to adjust any settings.

If however you are new to subwoofers, we recommend that you refer to the user manuals for both the subwoofer and associated speakers for information on configuring them appropriately. It is particularly important that the subwoofer volume and high-pass filter controls are set appropriately.

### NOTE

---

**When you use the subwoofer's LFE input socket, the subwoofer's internal filtering will be bypassed. However, the SOUND HUB or SOUND HUB COMPACT will apply the appropriate filtering to the audio routed to the subwoofer and the other speakers in the system. If the subwoofer in use has no dedicated LFE input, either switch its low-pass filter to bypass or set its low-pass filter frequency to maximum.**

---

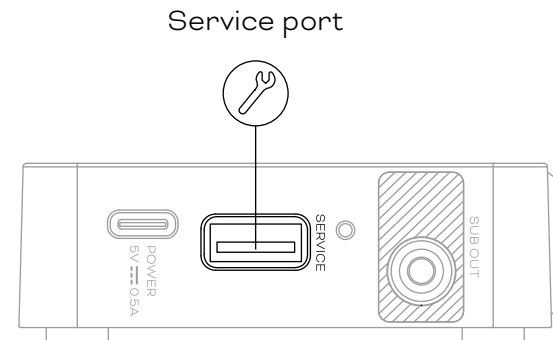
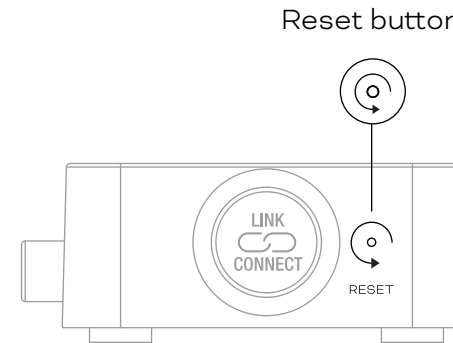
## 5. Maintaining your DALI WSR

Your DALI WSR should not require any special treatment beyond the kind of care that you would give other high value items in your home. Use a soft dry cloth to dust off the case. We do not recommend the use of any cleaning fluids or sprays, but if you wish to use furniture polish, apply it to a cloth rather than directly to the case.

If at any time you need to connect your DALI WSR to a different SOUND HUB or SOUND HUB COMPACT, you will need to reset it to its defaults. To reset your DALI WSR, use an appropriate tool to press and hold the RESET pinhole button for 1 second. The location of the reset button is illustrated in Diagram 5.

DALI may occasionally release updated firmware for your DALI WSR. Updated firmware may improve performance and reliability or introduce new features. Firmware updates are applied via the USB port labelled “SERVICE” on the rear panel of the WSR. Firmware updates will be made available for download from the DALI website and will be accompanied by full instructions on the update procedure.

DIAGRAM 5



## 6. Technical Specifications

### DALI WSR Wireless Subwoofer Receiver

Signal sample rate	96 kHz
Signal resolution	24 bit
Audio input	Wireless audio interface
Audio output	Mono RCA connector
Audio output level	2 V <sub>RMS</sub>
Power supply input	USB type C (5 V DC, 0.5 A)
Service port	USB type A
Dimensions (W × H × D)	76 × 62 × 25 mm 2.99 × 2.44 × 0.98 inches
Weight	59 grams 0.13 lbs
Colour	Black

