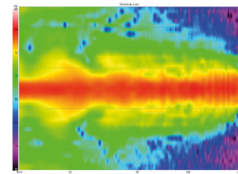
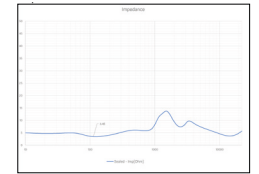


Horizontal Directivity



Vertical Directivity



Impedance

## MODEL S7i-LR



## TECHNICAL SPECIFICATIONS



Based largely on our flagship S7t. Here we have adapted the design for inwall applications. Shallow 4" mounting depth and integral aluminum extrusion rear enclosure insure consistent performance and minimal sound propagation to adjacent rooms. Featuring our proprietary DPC-Array controlling Mid/High frequencies, centered by our finest 28mm Beryllium dome and dual 28mm TPCD ultra-lightweight domes. All transducers are developed ground up by our engineers – bringing decades of research, culminating in this world class design. We teamed up with companies in the USA and Sweden to bring modern material science to hi-fi. Utilizing advanced Comsol acoustical modeling, our DPC-array is the result of 18 months of painstaking simulations and prototyping. The result is one of the most technologically advanced loudspeakers available. This new tweeter/waveguide DPC-Array delivers amazing accuracy, smoothness, and directivity control to handle the critical vocal range and delicate treble. All S-Series speakers share the same DPC-Array and benefit from our unique timbre matching technique across the entire series. The PerListen S7i is the world's first and only inwall loudspeaker to be certified for THX Dominus - their highest rating. A mark of achievement.

### BASIC

**Dimensions (HxWxD)**  
1036.6 x 298.6 x 111.2mm  
40.8 x 11.8 x 4.4"

**Mounting dimensions (HxWxD)**  
996 x 257 x 101.7mm  
39.2 x 10.1 x 4.0"

**Weight**  
26.4 kg (58.0 lbs.)

**Available finishes**  
White grille, Black baffle

### TECHNICAL

**Enclosure Alignment**  
4-way acoustic suspension

**Driver complement**  
DCP-Array: 28mm Beryllium  
28mm(2) Textreme TPCD  
Woofers: 180mm(4) Textreme TPCD

**Sensitivity**  
91.9dB / 2.83v / 1.0m

**Impedance**  
4Ω nominal / 3.4Ω min

**Response Linearity**  
80 - 20kHz +/-1.5dB window

**Frequency Response (-10dB)**  
45 - 37kHz

**Typical In Room bass extension**  
37Hz

**Recommended Amplifier Power**  
100 - 600W RMS

**SPL capability @1m (100-20kHz)**  
119.7dB peak  
117.0dB peak <3% 2nd, 3rd Harmonics

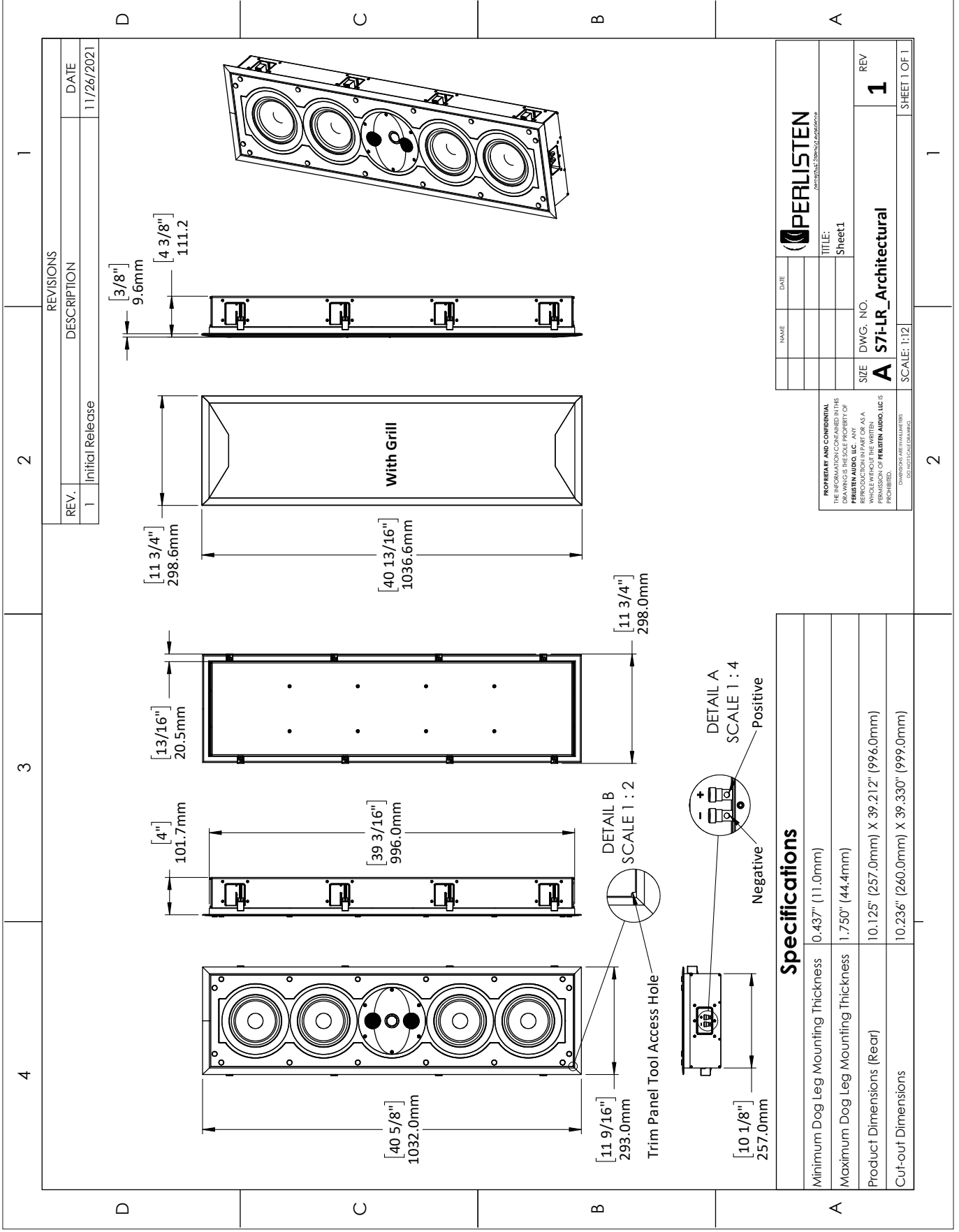
**Certification**  
THX Dominus



**DPC-Array**  
Directivity pattern control  
\*USA Patent pending



**TPCD**  
Thin Ply Carbon Diaphragms

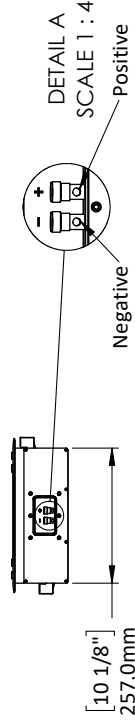


REVISIONS		DATE
REV.	DESCRIPTION	DATE
1	Initial Release	11/26/2021

NAME	DATE
TITLE	Sheet 1
SIZE	DWG. NO.
<b>A</b>	<b>S71-LR_Architectural</b>
REV	<b>1</b>
SCALE: 1:12	
SHEET 1 OF 1	

Specifications	
Minimum Dog Leg Mounting Thickness	0.437" (11.0mm)
Maximum Dog Leg Mounting Thickness	1.750" (44.4mm)
Product Dimensions (Rear)	10.125" (257.0mm) X 39.212" (996.0mm)
Cuf-out Dimensions	10.236" (260.0mm) X 39.330" (999.0mm)

**PROPRIETARY AND CONFIDENTIAL**  
 THE INFORMATION CONTAINED IN THIS DRAWING IS THE SOLE PROPERTY OF PERLISTEN AUDIO, LLC. ANY REPRODUCTION OR TRANSMISSION OF THIS DRAWING, IN WHOLE OR IN PART, WITHOUT THE WRITTEN PERMISSION OF PERLISTEN AUDIO, LLC IS PROHIBITED.  
 DRAWING IS AN INSTRUMENT OF SERVICE



4 3 3 4 1

11 3/4" 298.6mm

40 13/16" 1036.6mm

13/16" 20.5mm

4" 101.7mm

39 3/16" 996.0mm

40 5/8" 1032.0mm

11 9/16" 293.0mm

10 1/8" 257.0mm

3/8" 9.6mm

4 3/8" 111.2

With Grill

Trim Panel Tool Access Hole

DETAIL A SCALE 1 : 4

DETAIL B SCALE 1 : 2

Negative

Positive

PERLISTEN

S71-LR\_Architectural

1

2

3

4

A

B

C

D