

CRITERION®



T+A
Engineering Emotion

The new Criterion speakers represent the consistent continuation of the realignment of our speaker portfolio: they bring to life our idea of music reproduction, pushed to its peak with the Solitaire speakers, in an attractive price range.

Siegfried Amft, Founder & Managing Director





Criterion S Loudspeakers

How can globally acclaimed cutting-edge technology be transported into a new price range? Is it possible to create a technologically similar derivative that can capture and even consistently advance central ideas of its donor product? These questions accompanied us during the conceptualization and development of the Criterion S speakers.

For over 40 years, the name Criterion has been synonymous with a technically demanding yet extremely effective construction principle – the Transmissionline. Thanks to continued refinements, the current MultiResonator Transmissionline Generation enables a unique bass reproduction: extremely deep, clean and capable of volume. Combined with the Symmetric Directivity technology from our Solitaire reference series, the new Criterion speakers bring our vision of T+A sound to life in a breathtaking manner.

Criterion S

Idea

Like all T+A loudspeakers, the Criterion speakers are designed to make audiophile sound reproduction and musical enjoyment a harmonious unity, rather than a contradiction. The MultiResonator Transmissionline and the Symmetric Directivity System derived from our Solitaire reference speaker series, installed exclusively in the Criterion speakers, are the results of years of improvements to our technologies. They allow for precise, and impressively strong bass reproduction despite the compact enclosure, while the sound-focusing system

effectively minimizes room reflections with surprising directional effect. Coming with high-performance chassis, featuring our unique Star Stabilizer technology, the Criterion speakers are the physical embodiment of our brand claim: emotions generated by engineering.



Design & Construction - Excitingly reimaged

With our Solitaire speakers, we marked the beginning of our new design language, which we call „Classic Modernity.“ From the very first stroke, the Criterion speakers were intended to combine not only the best possible sound reproduction and exciting design but also set their own standards in both areas: Bauhaus fronts integrated into the body are a subtle nod to earlier T+A speakers, while the innovative body shape represents a gentle but nevertheless distinctive modernization. Its sculpturally curved exterior is inspired by the shapes of Art déco,

making the Criterion a design object in itself, whilst cleverly concealing the internal volume of more than 60 liters.

Within these 60 liters, a Transmissionline system produced to the highest standards of design and craftsmanship is installed, laying the foundation for T+A's typical durability and sonic perfection.



Symmetric Directivity

Regardless of a loudspeaker's quality, room influences such as reflections from ceilings and walls can significantly disturb sound quality, thereby counteracting the speaker's actual capabilities on the final path to the listener. With the introduction of the Symmetric Directivity Design in our Solitaire speakers, we demonstrated how such reflections can be significantly reduced by concentrating the direct sound in the listening area. In the Criterion speakers, a derivative of this technology is used, featuring two symmetrically arranged midrange drivers

above and below a completely new dynamic tweeter, made of magnesium. The tweeter, midrange, and crossover components work together to create a soundstage with impressive localization, imaging, and naturalness of all instruments and voices, whose sound completely detaches from the speakers and stands concert-like in the room.





Criterion

S 230

200 W / 4 Ohms
29 Hz - 45 kHz

T+A

T+A elektroakustik GmbH & Co.KG
PLANCKSTR. 9-11 | 32052 HERFORD
GERMANY

Connections

Transforming signals supplied by amplifiers back into the artists' vision - this is the task for every T+A loudspeaker. That's why we optimize even the smallest details, such as the connection terminals. If these are made of inferior materials, unpleasant distortion occurs, audibly impairing the music reproduction.

Hence all T+A terminals are made of high-quality brass, which is subsequently hard gold-plated without nickel: incoming signals are thus transmitted to the crossover and chassis without distortion.

Two separate terminals are available for the bass and mid-high range, each of which is connected directly to the respective crossover sections for the bass and mid-high range. This means that the Criterion is ideally equipped for bi-wiring or bi-amping operation.

Transmissionline

Maximum bass power with the highest precision. To achieve this apparent contradiction, the latest generation of T+A MultiResonator Transmissionline technology builds on the legendary Multiresonator and Compensated Transmissionline systems found in previous Criterion series. A delicately folded and precisely calculated MultiResonator structure on the inner back of the speaker, resembling an organ pipe, maximizes sound pressure in the low-frequency range and simultaneously ensures excellent transient and impulse response.

Sound colorations and inaccuracies are thus extinguished. To prevent the system's generated energy from negatively affecting the chassis from the inside, the tweeter and midrange drivers are shielded by dedicated airtight chambers. The resulting internal interlocking keeps the enclosure free of resonances and structure-borne noise even at the highest levels: only the pure music signal, without any unwanted coloration, remains intact.





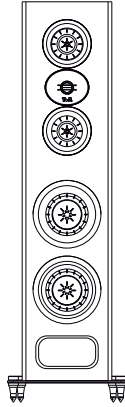
Organic Baffle

While the long sound waves of deep bass frequencies impose enormous demands on the structural strength of the enclosures, the higher-frequency soundwaves, only a few millimetres or centimetres long, require treatment of a completely different kind. Baskets, screws, or the smallest edges in the baffle would bend or break the precisely radiated frequencies, allowing small but audible colorations to disturb the music.

The T+A OrganicBaffle Design is our scientific answer to this problem. The baffles of all Criterion speakers are held completely without external screws. Their shape is calculated without any edges for optimal sound radiation, preventing such disturbances before they arise rather than minimizing them afterward.



Specifications



Criterion S 230

Floor-standing speaker, 3-Way, Transmissionline

200 Watts

300 Watts

4 Ohms

29 - 45000 Hz

87 dB

2 x 170 mm

2 x 150 mm

1 x 25 mm

200 / 2000 Hz

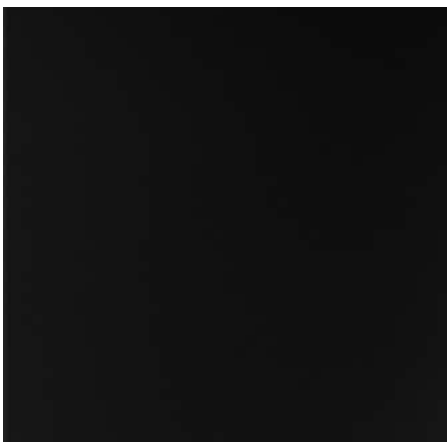
106 x 24 x 48 cm, 42 x 9.5 x 19 inch
Height incl. base

37.5 kg, 82.7 lbs

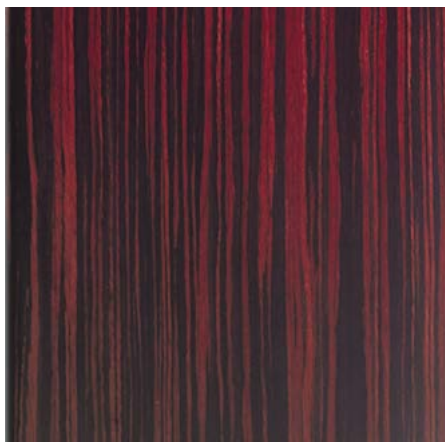
Principle	Floor-standing speaker, 3-Way, Transmissionline
Nominal power rating	200 Watts
Music power rating	300 Watts
Impedance	4 Ohms
Frequency range	29 - 45000 Hz
Sensitivity	87 dB
Drive units bass	2 x 170 mm
Drive units mid range	2 x 150 mm
Drive unit high range	1 x 25 mm
Crossover frequencies	200 / 2000 Hz
Dimensions H x W x D	106 x 24 x 48 cm, 42 x 9.5 x 19 inch Height incl. base
Weight	37.5 kg, 82.7 lbs

Technical modifications reserved

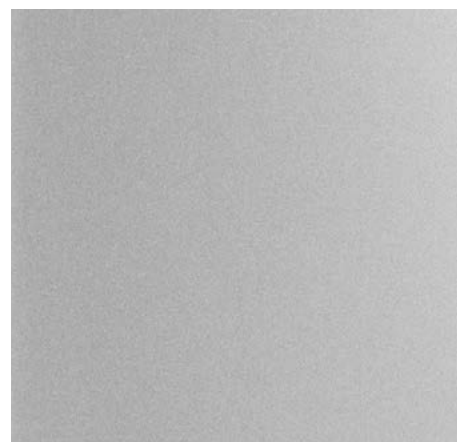
Finishes



Rubbed lacquer black 12



Macassar 90



Arctic silver 96



T+A elektroakustik GmbH & Co. KG
Planckstraße 9 - 11
D-32052 Herford

T +49 (0) 52 21 / 7676-0
F +49 (0) 52 21 / 7676-76

info@ta-hifi.com
www.ta-hifi.com

9008-00452