

zappitiTM Reference

High Range 4K HDR Media Player





Zappiti designs and manufactures only professional grade Video Management Systems; delivering the highest quality, outstanding performance, and best possible user experience.

The award winning Zappiti devices are being successfully used to improve the movie watching experience, in residential and commercial environments all over the globe.

All of the Zappiti products are designed to provide our end-user customers with convenient and intuitive access to their entire movie library collection, featuring an impressive user interface with movie covers. Zappiti scan your video contents (movies and tv shows) located on local drive connected to your Zappiti player, or on a NAS through the local network. Zappiti collect the cover art and various info such as casting, director, release date, rating, etc.

Sit back in your home theater seat with your friends or family. Choose your film easily. Browse a genre. Sort movies by rating, duration, or release date. Read a synopsis. Watch the trailer. Then, press PLAY to enjoy your movie. After the end credits roll, eventually watch the extras or wait for the auto launch of the next episode of your favorite tv show.



Action	Sci-Fi	Fantasy	Adventure	War	Western
History	Drama	Documentary	Music	Romance	Classic
Animation	Crime	Thriller	Horror	Comedy	Other

Key Features:

Processor Realtek RTD1619DR
Dolby Vision
HDR10+
Zappiti MagicPixel V3 Video Processing
Dolby VS10 Video Processing
Dual HDD Rack Enclosure up to 40 TB
Massive Toroidal Power Transformer
XLR Balanced
Premium DAC ESS ES9038Q2M
XMOS XU208 Audio Processor
"Direct DSD" mode
Dolby Atmos and DTS:X
AV Sync. Adjustment
Widevine Level 1 DRM
OLED display

Zappiti Reference combines all of the color and crisp detail of true 4K Ultra HD, HDR10+ and Dolby Vision with stunning sound.

The Zappiti Reference is at the same time a high end media player and a media server capable of streaming content to other Zappiti devices within your house through the exclusive Zappiti Share advanced streaming protocol.

The Zappiti Reference supports the majority of digital audio and video formats, including the most modern 4K HDR standards such as Dolby Vision and HDR10+, almost all recent video file formats, full BD/UHD Menus, HEVC video codec with one billion colors (10-Bit color encoding), VP-9, 3D video standards with 3D subtitles, high resolution audio files such as FLAC, ALAC, or MQA up to 352 kHz and features wide solid chassis, dual HDMI output with audio only for perfect audio video split, an audio-video sync settings option (forward/backward), 4K 60p compatibility, Dolby Atmos and DTS:X, for the best possible home theater experience. The Zappiti Reference includes Premium DAC ES9038Q2M with ultra-low jitter, bit-perfect digital audio processing, "Direct DSD" mode, Toroidal power transformer with separated circuits for both digital and analog parts, premium balanced XLR connectors and OLED display to control the media player without TV.

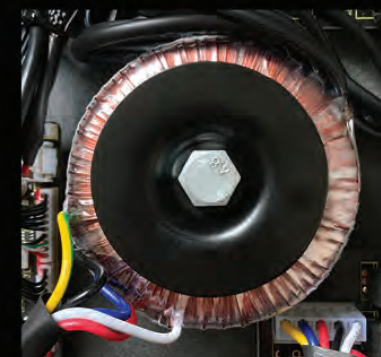


Zappiti Reference media player supports direct playback of full Blu-ray disc images with menus in Dolby Vision, as well as various file formats including MKV, MP4, TS, and M2TS



Massive Toroidal Power Supply

The Zappiti Reference is powered by a massive toroidal power transformer, which provides superior efficiency over standard power supplies and delivers a very clean and robust power source. As a result, the Zappiti Reference provides a crystal sharp picture and extreme depth of black, particularly critical in video projection systems. The flesh, sand and grass tones, very difficult to reproduce, are rendered to perfection. The materials are more detailed and the plans are more detached from the others, offering a three-dimensional aspect. Audio outputs are noise-free for more natural timbres, perfect channel balance, for perfect silence in quiet scenes and nuance breathing, and faster dynamic accents. The toroidal power transformer of the Zappiti Reference sonically "aligns" the complex analog and digital signal into something that's properly outlined and shaped. This alignment is responsible for tighter lines and an overall more insightful listening experience.



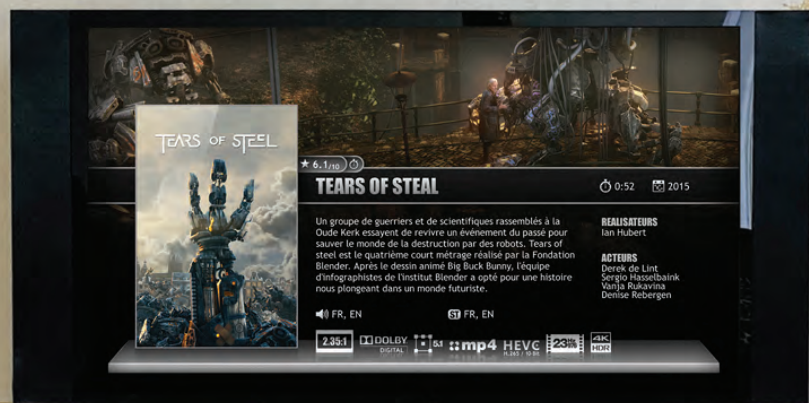
Premium DAC ESS ES9038 PRO

The Zappiti Reference is based on a premium 32-bit DAC ESS ES9038Q2M with industry's leading level low distortion characteristics. The ES9038Q2M SABRE32 Reference DAC is a very high-performance, 32-bit, stereo audio D/A converter designed for audiophile-grade power sensitive applications such as digital music players, or professional applications such as audio studio recording systems, mixer consoles and digital audio workstations. Using the critically acclaimed ESS patented 32-bit HyperStream® II DAC architecture and Time Domain Jitter Eliminator, the ES9038Q2M delivers a DNR of up to 128dB and THD+N of -120dB, a performance level that will satisfy the most demanding audio enthusiasts. The Zappiti Reference handles up to 32-bit 384kHz FLAC / PCM, DSD256 via DoP and native DSD512. The ES9038Q2M SABRE32 Reference DAC sets the standard, SABRE SOUND®, for HD audio performance. You can play music in the most advanced DSD format in "Direct DSD" mode, as well as in various lossless formats.

XMOS Audio Processor

The Zappiti Reference incorporates an XMOS XU208-128-QF48 audio processor that delivers perfect digital audio processing with original sample rate preservation, ultra-low jitter and reclocking. The XMOS XU208-128-QF48 chip offers significant power allowing fast and efficient data processing for the minimum latency required for bit-perfect reading. It is accompanied by 3 separate clocks precisely respecting each multiple of 44.1kHz and 48kHz from 16 to 32-bit but also by an ultra-low noise voltage regulator ADP150 and MLCC decoupling capacitors for precise and clear reproduction. The most advanced DSD formats are supported in "Direct DSD" mode, as well as various lossless formats, including FLAC / PCM up to 384kHz.







Dual HDD Slot

With its dual 3.5" SATA hot-swap rack, the Zappiti Reference is capable of supporting up to 40 TB total storage internally; the equivalent of about 1000 Blu-rays or 500 4K Ultra HD Blu-rays. And as it is possible to exchange hard drives, you have no capacity limit! With the Zappiti Reference, you no longer need to worry about storage problems.
Note: When using 2 hard drives, you can mix contents from the 2 drives into a single collection.



Dolby Vision

The ultra-vivid image of innovative visual technology Dolby Vision®, brings characters to life with darker darks, brighter brights, and a remarkable color range you can't get anywhere else. Experience a remarkable color palette, sharper contrasts, and incredible brightness that feel more like looking through a window than at a screen. This is HDR like you've never seen it before. Discover subtle details you simply can't see with a standard picture, for a viewing experience without compromise, just as the filmmakers and creators intended. Zappiti Reference media player supports direct playback of full Blu-ray disc images (BDMV and ISO) with menus in Dolby Vision (MEL and FEL), as well as various file formats including MKV, MP4, TS, and M2TS. All popular Dolby Vision profiles (P4, P5, P7 MEL and FEL, P8) are supported. The extended Dolby Vision metadata is used and transmitted to the TV to improve picture quality.

HDR10+

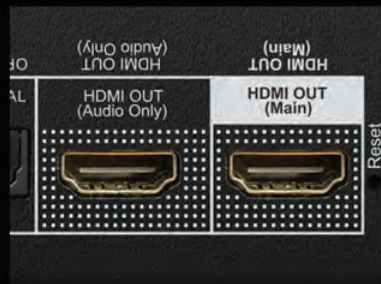
The Zappiti Reference is compatible with HDR10+ technology. HDR10+ is the latest and most advanced HDR technology, building upon HDR10 to further enhance the viewing experience. HDR10+ signals not just the dynamic range (the ratio of light to dark) of video content on a scene-by-scene (or even frame-by-frame) basis, it also provides, with minimal metadata, the scene characteristics between bright and dark so that important detail can be kept. This enables displays to reproduce images more realistically, adhering to the creator's intent. Whereas static HDR, such as HDR10, utilizes static tone mapping uniformly across the duration of the content, HDR10+ employs dynamic tone mapping to optimize each scene, individually increasing brightness and adding contrast to fit within a display's capabilities.





DVD, Blu-ray & UHD Menu Support

Display the DVD, Blu-ray and UHD menus and get access to additional content (director's cuts, theatrical versions, bonus extras, bookmarks, etc.) This feature is compatible with both ISO and BDMV (DVD, Blu-ray, Blu-ray 3D and 4K UHD). Or, if you do not want to display menus, you can start a movie immediately without trailers or warnings. The seamless branching is also perfectly supported for perfect gapless playback on director cut editions.



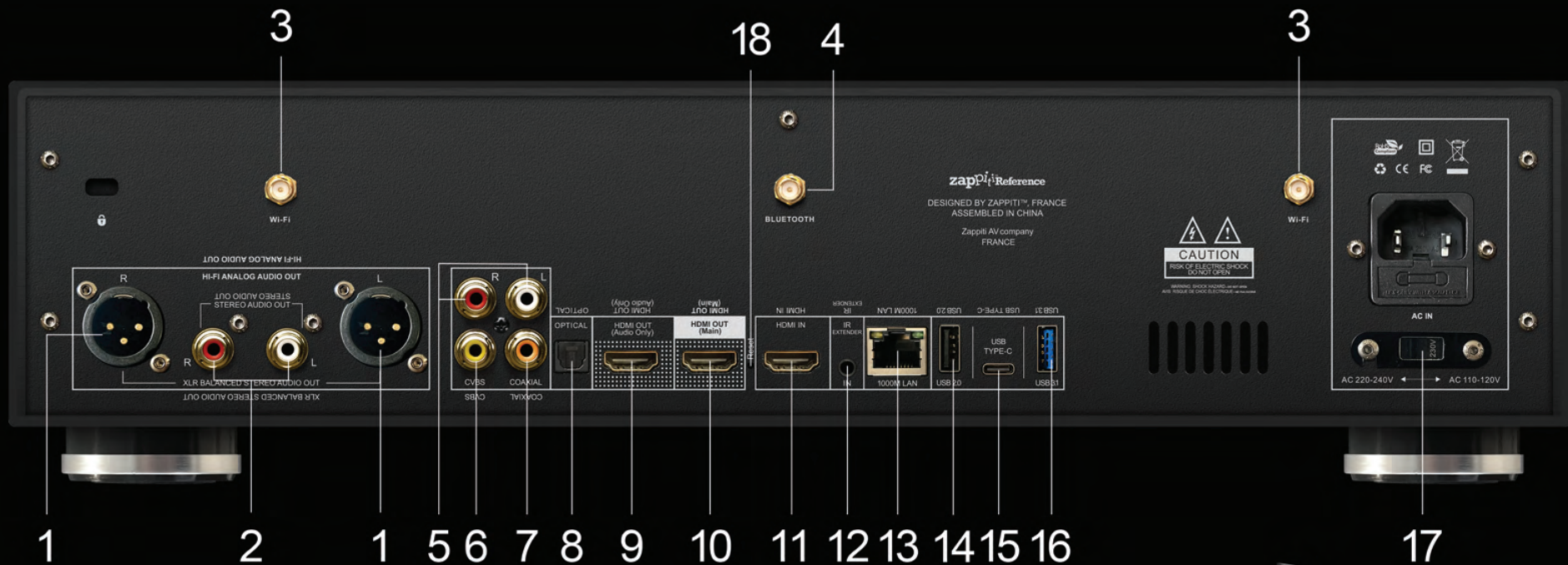
Dual HDMI Output

The Zappiti Reference features two HDMI outputs – one HDMI Out Main port for connecting to the latest UHD 4K TVs, projectors and A/V receivers, and an additional HDMI Out Audio Only port (v1.4) dedicated to audio for connecting to older A/V receivers and for better audio performances. The HDMI Audio Only port features a high-stability, high-precision clock. This design significantly reduces jitter and eliminates timing errors, allowing you to enjoy your audio & video contents with increased accuracy when you use the audio-only HDMI output port for connecting the audio signal to your A/V receiver. In addition, on the video output, the audio stream is automatically muted when the HDMI Audio Only output is used, thereby reducing the effects of video noise on the main HDMI output.



Top-Quality Components

The Zappiti Reference also includes Hi-End components from famous vendors such as JEC power connector (used in aerospace industry), Neutrik audio connectors (Germany) Philips diodes (NL), Nichicon Audio Series and Nippon Chemi-Con capacitors (Japan), ERO series from Vishay Roederstein and WIMA capacitors (Germany). WIMA filter capacitors are designed based on low loss polypropylene film and feature high AC capacity at high frequencies as well as low ESL and ESR values.



- | | |
|--------------------------------------|--------------------------------------|
| 1. Balanced XLR Stereo Analog Output | 10. Main HDMI Output (Video + Audio) |
| 2. Hi-Fi Stereo Analog Output | 11. HDMI Input |
| 3. Wi-Fi Antenna | 12. IR IN (IR extender included) |
| 4. Bluetooth Antenna | 13. LAN 10/100/1000 |
| 5. Stereo Analog Output | 14. USB 2.0 Host |
| 6. Analog Video Output CVBS | 15. USB TYPE-C |
| 7. Coaxial Digital Audio Output | 16. USB 3.1 Host |
| 8. Optical Digital Audio Output | 17. AC voltage switch (110/240V) |
| 9. Audio HDMI Output (Audio only) | 18. Reset |



Wi-Fi and Bluetooth Antennas



Next



All



Movies



TV Shows



Recents



Categories



Concerts



4K Ultra HD

zappiti™ Video

The Best Media Center

Zappiti Reference includes Zappiti Video, the best entertainment hub available on the market, featuring an impressive user interface with movie covers. Zappiti scans your video contents (movies and TV shows) located on local drive connected to your Zappiti player, or on a NAS through the local network. Zappiti collects the cover art and various info such as casting, director, release date, rating, etc. Sit back in your home theater seat with your friends or family. Choose your film easily. Browse a genre. Sort movies by rating, duration, or release date. Read a synopsis. Watch the trailer. Then, press PLAY to enjoy your movie. After the end credit roll, eventually watch the extras or wait for the auto launch of the next episode of your favorite TV show. Zappiti Video features an astonishing GUI, and optional beautiful skins. Zappiti features automatic top banner (4K Ultra HD Blu-ray, Blu-ray, Blu-ray 3D, DVD, etc...), and special top banner such as: Final Cut, Director's Cut, Theatrical Cut, Unrated, Disc 1/2, Bonus, Concert, Special Edition, etc. It also features: 2.35:1 mode, soundtracks during while browsing movies or TV shows, parental control, control and admin using tablet or smartphone, exclusive Zappiti AI for the best movie identification as possible, exclusive multilingual movie covers with top quality and fanarts database (Zappiti DB in addition to TMDB), search engine, filters and sorts, automatic playback of the next TV show episode and so many exclusive features.





Sagas

Sagas films are automatically placed in groups and sorted by release date. A saga cover dedicated to the collection is associated with the group and movies are displayed in a stunning carousel with great 3D motion effects!



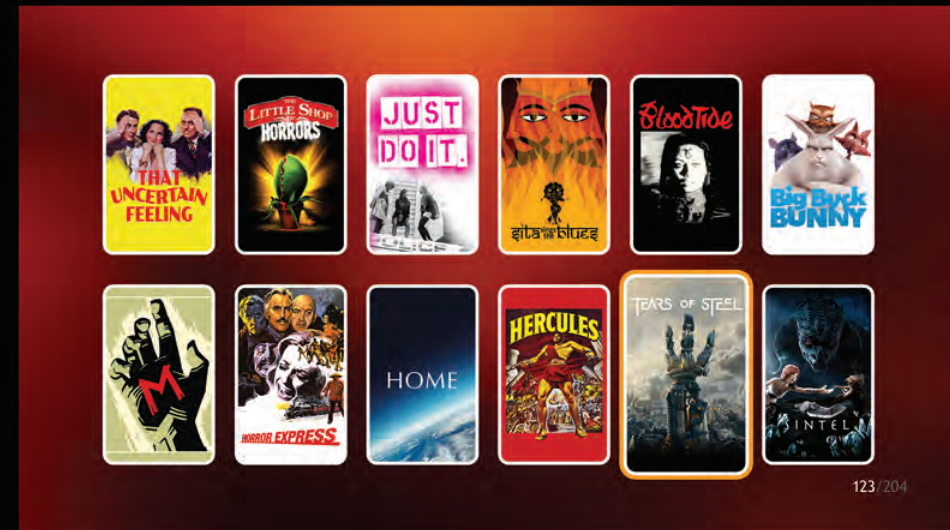
Zappiti Share

With the "Zappiti Share" feature, you can share video files stored on the internal (or external) hard drive to other Zappiti media players (including older generation). So with "Zappiti Share", you can benefit from a true mutiroom video system and playback up to 4 files at the same time in different rooms in Blu-ray quality! (2 in UHD quality). You can also share other types of media files such as music or photo content. Thanks to Zappiti Sync, your movie collections are automatically synchronized to your Zappiti players (multiroom).

With Zappiti Share, you can also administer and edit your collection from your ablet or your smartphone (iOS and Android) or from your computer (Mac / PC).

Zappiti Db

In addition to movie covers collected from TMDb, Zappiti offers its own base of movie covers — Zappiti Db. These thousands of posters were specially designed by the Zappiti graphic design team to perfectly adapt the Zappiti display ratio. Thanks to these high-quality movie covers available in various languages, the titles of the films are always legible, the important visual elements and the texts are not cropped, and the posters are cleaned and standardized for the best possible visual experience. At this time, the Zappiti Db movie cover database contains about 16,000 posters including the most popular and newest movies, but also many classics. And every day, dozens of new posters are added in the Zappiti database.



Zappiti Scope

Zappiti Scope video processing perfects the widescreen home theater experience by using the entire area of the 2.35:1 screen when displaying your Zappiti collection. You can also perfectly adjust the overcan (cropping) using a dedicated tool to perfect match the aspect ratio of your screen. In addition, the Zappiti players are also compatible with resolution 4096x2160 in addition of 3840x2160 for professional use.



Zappiti Filters & Sorting

Zappiti Video features mix of filters and sorting. You can quickly find your favorite TV shows and movies by using both sorting and filters. For instance, you can browse the category "Action", then filter by "seen" and sort by "most recent".



Zappiti BonusLive

Access to additional contents of the movies such as: Making Of, Deleted Scenes, Extracts, Reviews, Bloopers Reels, Soundtracks...



Zappiti Subtitle

Thanks to Zappiti Sub, you can easily download the subtitles of a movie or TV show episode, directly from the Zappiti player!



Zappiti Search

Easy access to your movies or TV shows thanks to Zappiti powerful search engine combined with smart filters (actor, director, length, rating, release date...).



Parental Control

With the parental control feature, you can designate movies as "children's" and block access to other movies with a PIN code. Thus, your children can safely access only their movies! In addition, the child mode provides direct access to movies without the synopsis for greater ease of use. Finally, the parental control feature blocks access to the editing and deleting functions of your Zappiti collection for perfect safety.



AUDIO OUTPUTS / INPUTS

- HDMI Out 2.0b (Video & Audio).
- HDMI Out 1.4 (Audio-Only).
- HDMI In 2.0b (Video & Audio).
- Digital Out (Coaxial RCA & Optical).
- Analog Audio Stereo RCA & Video CVBS Out.
- Analog HiFi Stereo RCA Out.
- Analog Balanced XLR Out.

DRMs

- Widevine L1 DRM: Watch premium online video services in 1080p and UHD. Security Level 1 (L1) is a complete processing performed in a Trusted Execution Environment (TEE). This level refers to the highest level of DRM (hardware DRM) and let Zappiti to stream premium video services at resolutions up to UHD quality. Level 2 cannot stream videos higher than 480p.

TECHNICAL

- Chipset Realtek RTD1619DR.
- CPU ARM Cortex-A55 (hexa core). +77% faster than 4-core ARM A53 used in the previous generation media players.
- GPU ARM Mali-G51 MP3. +50% faster than Mali T-820 used in the previous generation.
- 4GB RAM. 2x more than in the previous generation media players.
- 32GB NAN eMMC. 2x more than in the previous generation media players.

DIMENSIONS

- 16.92in × 4.33in × 13.5in (W × H × D)
(43.0cm × 11cm × 34.3cm).

WEIGHT

- 14.77lb (6.7 Kg).

POWER

- Max consumption: 50W.
- Typical: 45W (Without HDD).
- High power standby: 12W.
- Low power standby: 0.02W.
- AC ~220-240/110-120V, 50/60Hz with detachable line cord.

NETWORK

- Gigabit Ethernet (1000 Base-T), Wi-Fi, Bluetooth.

OTHER CONNECTIONS

- USB 3.1, USB 2.0 (x2 front, x1 back), USB Type-C.

CONTROL

- Ethernet control from Crestron, Control4, Savant, RTI, ProControl, URC, Elan, Logitech, the Zappiti Media Control App for tablet and smartphones. (Coming Soon).
- IR input with provided IR Extender.

STORAGE

- Dual HDD Rack up to 40 TB of internal storage.

VIDEO DISPLAY FORMATS

- Resolutions: 2160p60/50/30/25/24, 1080p60/50/24, 1080i60/50, 720p60/50, 576i, 576p, 480i, 480p.
- Chroma: 4:4:4 8-bit up to 2160p60, 4:4:4 10/12-bit up to 2160p30, 4:2:2 12-bit up to 2160p60, 4:2:0 8/10/12-bit at 2160p50/60 only.
- Color spaces: BT.2020, BT.709, BT.601.
- Aspect ratios: 1.78:1 and 2.35:1 (Cinemascope), user interface selectable.
- HDR support for HDR10, HDR10+, Dolby Vision and metadata.
- Audio Video Sync. (backward/forward).

AUDIO FORMATS

- DTS-WAV, MPEG, MP3, ALAC, APE, M4A, M4A, AIFF, WAV, WavPack, VSELP, FLAC, AAC, AAC-LC, HEAAC, HE-AAC v2, AMR-NB, OGG, LPCM, PCM, ADPCM, MQA, SACD ISO, DSF, DFF (DSD).
- DTS:X Pro, DTS:X, Dolby Atmos, Auro3D.
- DTS-HD MA, DTS-HD HRA, Dolby TrueHD, EAC3.

MEDIA

- Video File Formats: UHD ISO, 3D BD ISO, BD ISO, BDMV, MKV, MKV 3D, MK3D, MPEG-TS, MPEG-PS, MPEG, MPE, MPG, TS, TP, M2TS, VOB, AVI, MOV, MP4, QT, WebM, DVD-ISO, VIDEO_TS, RMVB, RM, DAT, VOB, 3GP, FLV, DAT, AVCHD 2.0 (AVCHD 3D, AVHD Progressive).
- Video Codecs: HEVC, H.265, x265 (up to Main10 Level 6.1 High 60p in 4K), MVC, AVC, MPEG-2, MPEG-4, VC-1, H.264/x.264 (up to 60p in Full HD and 24p/20 Mbps in 4K), FLV, AVS, XVID, DIVX (from version 4), Sorenson Spark L70, VP9 HW (up to 4K 60p) ; ultra high bitrate support (up to 400 Mbit/s in HEVC 4K).