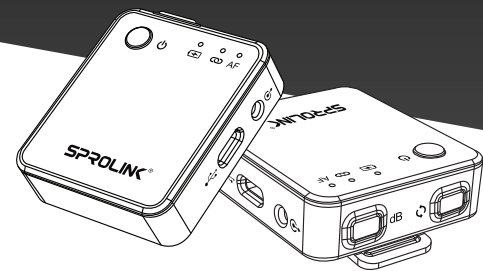


Mini2

Wireless Microphone System



SPROLINK
CREATIVE VIDEO REVOLUTION

SINCE 1994

1 Introduction

MIC1&MIC2 is a miniature, full-featured wireless microphone system. The transmitter built in an electrets microphone, which can be clip on the collar directly, or it can be connected to the lavalier microphone by an external input interface. It is used as an ultra-small bodypack transmitter.

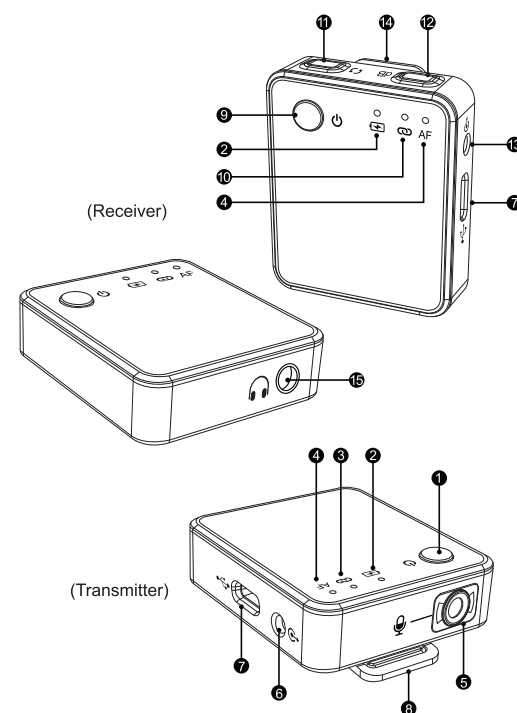
This product uses ISM's global unlimited 2.4G frequency band for transmission. The receiver and transmitter are automatically paired successfully within 2 seconds after powering on, and the effective use distance reaches 50 meters (open and wide occasions). Both the receiver and the transmitter use clear and bright LED lights to display the current dynamic input and output audio information, and the output volume is adjustable. The 3.5mm TRS or Type-C digital output is used to connect to digital/SLR cameras, camcorders, recorders, tablets, mobile phones and other devices to assist in picking up high fidelity Audio.

Suitable for interviews, micro-video recordings, or business presentations.

Characteristic

- The body is small and easy to carry.
- Adopt 2.4G ISM global unlimited frequency band transmission.
- Widely compatible with computers, digital / SLR cameras, camcorders, voice recorders, tablets, and mobile phones.
- Both the receiver and transmitter use clear and bright LED lights.
- Built-in electret microphone, also supports external lavalier microphone, output volume can be adjusted.
- Automatic connection or one key pairing after power on.
- Built-in lithium battery, charging with USB 5V.

2 Product introduction

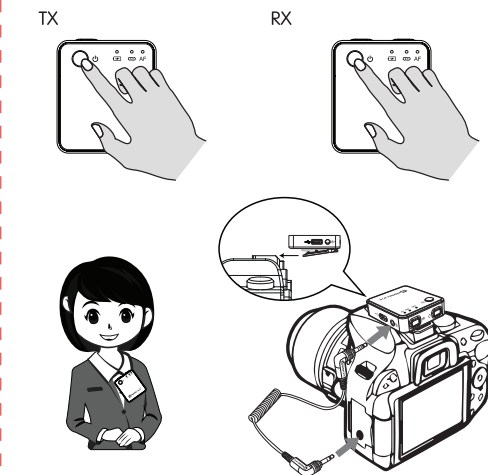


3

- 1 Power/Pair: Long press 2 sec to turn on or turn off the power/press twice to pair.
 - 2 Power indicator light:
Orange long light: the power is successfully powered on.
Orange light flashing: low battery status.
Red long light: charging status.
- Note: In the charging state, the light is off to indicate that the charging is complete.
- 3 10 Connection indication:
Blue light flashing: Signal searching.
Blue long light: The device is successfully connected.
 - 4 AF indication: Green long light: voice input;
OFF: No sound input.
 - 5 Built-in microphone: If no external microphone is inserted, the transmitter will use an internal electret microphone. (on board processing optimized for voice)
 - 6 External microphone input port: standard 3.5mm TRS microphone input provides 2.5V power supply.
 - 7 USB-C port: Standardized USB-C port for charging. The receiver's USB-C port has a digital output for recording.
 - 8 Transmitter pocket clip: It can be used directly on the collar.
 - 9 Power: Long press 2 sec to turn on or turn off.
 - 10 Pairing button: need to be used with the power button 1 of the transmitter, RX Long press the pairing button to enter the pairing state (10 the blue light flashes), and then quickly press the TX power button 1 twice to enter the pairing state (9 the blue light flashes), and wait for the automatic pairing to succeed.
- Note: Generally, when leaving the factory, RX and TX have been paired.
- 12 Volume button: Press the "dB" button to set 3 audio setting levels cyclically, and during setting, the 4 position (RX) will flash according to the audio output level position of the setting (Level 1 flashes twice, Level 2 flashes three times, Level 3 flashes four times).
- 13 TRS Output port: Standard 3.5 mm TRS output.
 - 14 Receiver pocket clip: You can clip the product belt clip to the hot shoe of the SLR camera directly.
 - 15 TRS Monitor port: support standard 3.5mm headphone monitor output.

4

Application installation mode



1. Press the power switch for 2 seconds, and the pairing is successful after power on.
2. Clip the transmitter onto the user's collar or connect the external microphone.
3. Before installing the receiver into the camera, create a certain space between the receiver clip and the receiver, and then push the receiver into the camera bayonet to fix it.
4. If an external microphone is used, connect 3.5mm output cable to the output jack of the microphone and the other side to the camera audio input jack.

5 Specification

System Specifications

- Transmission frequency band: 2400 MHz ~ 2483.5 MHz
- Audio frequency response: 200 Hz ~ 20 KHz ± 3 dB
- Signal to noise ratio: 85 dB (Circuit performance)
- Maximum input voltage: 97dB SPL (Built-in microphone)
- Pairing type: Automatic
- Effective Working Distance: 30 m (there is block)
50 m (in open space)
- Working temperature: -5°C to $+50^{\circ}\text{C}$

Receiver Specifications

- Transmission frequency band: 2400 MHz ~ 2483.5 MHz
- Transmission type: frequency hopping/digital FSK
- Receiving sensitivity: -86 dBm
- Antenna method: Ceramic antenna
- Display mode: multi-function LED display mode
- Power requirements: built-in lithium battery, standard USB 5V charging via TYPE-C interface
- Battery life: > 7 hours
- Output connector: 3.5 mm TRS, Monitor, Type-C digital output
- Working temperature: -5°C to $+50^{\circ}\text{C}$
- Dimensions: 50 mm * 44.5 mm * 15 mm
- Weight: 35 g

6

Transmitter Specifications

- Transmission frequency band: 2400 MHz ~ 2483.5 MHz
- Modulation type: frequency hopping/digital FSK
- Transmit power: 10 dBm
- Antenna method: Ceramic antenna
- Microphone pickup method: omnidirectional (built-in microphone and external lavalier)
- Display mode: multi-function LED display mode
- Power requirements: built-in lithium battery, standard USB 5V charging via TYPE-C interface
- Battery life: > 7 hours
- Input connector: 3.5 mm TRS
- Working temperature: -5°C to $+50^{\circ}\text{C}$
- Dimensions: 50 mm * 44.5 mm * 15 mm
- Weight: 35 g

SPROLINK
CREATIVE VIDEO REVOLUTION

Love your Mini?
share with us #SPROLINK

@ SPROLINK
@ SPROLINK
@ SPROLINK



Scan the QR code
to find out more